

# Journal of Agricultural Biotechnology and Sustainable Development

Volume 8 Number 5 July 2016  
ISSN 2141-2340



*Academic  
Journals*

## ABOUT JABSD

**The Journal of Agricultural Biotechnology and Sustainable Development (JABSD)** (ISSN: 2141-2340) is an open access journal that provides rapid publication (monthly) of articles in all areas of the subject such as Effects of nitrogen fertilizer and irrigation regimes on seed yield of calendula, Partial purification of leaf lectin from Manihot esculenta and screening its fungicidal activity, genetic variability and interrelationship among the different traits in Microsperma lentil, Histopathology of Raphia hookeri leaf infected with Glomerella cingulata causing seedling blight, Effect of explant type, source and genotype on in vitro shoot regeneration in Macadamia etc.

The Journal welcomes the submission of manuscripts that meet the general criteria of significance and scientific excellence. Papers will be published shortly after acceptance. All articles published in JABSD are peer-reviewed.

### Contact Us

Editorial Office: [jabsd@academicjournals.org](mailto:jabsd@academicjournals.org)

Help Desk: [helpdesk@academicjournals.org](mailto:helpdesk@academicjournals.org)

Website: <http://www.academicjournals.org/journal/JABSD>

Submit manuscript online <http://ms.academicjournals.me/>

## Editors

**Prof. Olaleye A.O**

*Department of Soil Science & Resource Conservation, Faculty of Agriculture, The National University of Lesotho, Roma 180, Lesotho.*

**Prof. Ji-Hong Liu**

*College of Horticulture and Forestry Sciences, National Key Laboratory of Crop Genetic Improvement, Huazhong Agricultural University, Wuhan, 430070, China.*

**Dr Olufemi Martins Adesope**

*University of Port Harcourt, Nigeria, Nigeria.*

**Dr. Anil Vyas**

*Microbial Biotechnology and Biofertilizer Laboratory, Department of Botany, J.N. Vyas University, Jodhpur, India.*

**Dr. Meltem Sesli**

*College of Tobacco Expertise, Turkish Republic, Celal Bayar University 45210, Akhisar, Manisa, Turkey.*

**Prof. Mohamed Fouad M. Abdalla**

*Head of Vegetable Sci. Division, Faculty of Agric., Assiut University, Assiut, 71526, Egypt.*

**Dr. Guy L. Plourde**

*Departement of Chemistry, The University of Northern BC, 3333 University Way, Prince George, BC, Canada, V2N 4Z9.*

**Prof. Shao Hongbo**

*Institute of Life Sciences, Qingdao University of Science & Technology, China.*

## Editorial Board

**Dr. Kamal Ghasemi Bezdi**

*Cotton Research Institute of Iran,  
Beheshti St, Gorgan, Iran*

**Dr. Hossein Aliabadi Farahani**

*Islamic Azad University of Shahriar (Shahr-e-Qods)  
Branch, Iran.*

**Dr. Henry de-Graft Acquah**

*Department of Agricultural Economics and Extension,  
School of Agriculture, University of Cape Coast,  
Cape Coast, Ghana.*

**Dr. Shi Lei**

*College of Life Science, Qufu Normal University, Shandong  
Province, P.R. of China.*

**Dr. Johnson Toyin Fasinmirin**

*Federal University of Technology, Akure, Nigeria.*

**Dr. Olufemi Martins Adesope**

*University of Port Harcourt, Nigeria.*

**Dr. Selene Aguilera**

*Centro De Investigacion Y De estudios Avanzados Del, I.P.N  
Unidad Irapuato (Cinvestav-Unidad Irapuato), Mexico.*

**Dr. Shaid Javed Butt**

*MAS-Arid Agriculture University, Rawalpindi, Pakistan.*

**Dr. Birinchi Kumar Sarma**

*Institute of Agricultural Sciences, Banaras Hindu  
University, Varanasi 221005, India*

**Dr. R. Khalid Hussain**

*Shakarganj Sugar Research Institute, Jhang, Pakistan.*

**Dr. Osman Radwan**

*University of Illinois at Urbana-Champaign, USA.*

**Dr. Syed Zia ul Hussain**

*Plant Bacteriology and Plant Pathologist  
Shakarganj Sugar Research Institute, Toba Road Jhang,  
Pakistan.*

**Dr. Taiga Akpovughaye**

*kogi state university, Anyigba, Department of  
Biological Sciences, Nigeria.*

**DR. Hamdi Abbas Ibrahim**

*Nobles Group, Sudan.*

**Dr. Vo Quang Minh**

*Cantho University 3/2 Street, Ninh kieu district, Cantho City,  
Vietnam.*

**Prof. Alex C. Chindah**

*Institute of Pollution Studies Rivers State, University of  
Science and Technology Nkpulu-Oroworukwo,  
PortHarcourt, Nigeria.*

**Dr. Ömür Baysal**

*West Meditereanean Agricultural Research  
Institute (BATEM), Turkey.*

**Dr. Aditya Garg Pratap**

*West Meditereanean Agricultural Research  
Institute (BATEM), Turkey.*

**Dr. J. Francis Borgio**

*Department of Microbiology, St. Joseph's College  
(Autonomous), Bangalore – 27, India.*

**Dr. Radhakrishnan Senthilkumar**

*Center for Research and PG studies, Indian  
Academy Degree college, Bangalore, India  
560043,*

**Dr. Ali Abdullah Alderfasi**

*King Saud University, College of Food and  
Agricultural Science, Riyadh, Saudi Arabia.*

**Prof. Mousumi Debnath**

*Jaipur Engineering College and Research Centre,  
(Affiliated to Rajasthan Technical University  
and accredited by All India Council of technical education),  
India.*

**ARTICLE**

- In planta seed transformation of Kenyan cowpeas (*Vigna unguiculata*) with P5CS gene via *Agrobacterium tumefaciens*.** 32  
Rachel Okeyo-Ikawa, Nelson Onzere Amugune, Norman Chege Njoroge, Pauline Asami and Timothy Holton

Full length Research Paper

## In planta seed transformation of Kenyan cowpeas (*Vigna unguiculata*) with P5CS gene via *Agrobacterium tumefaciens*.

Rachel Okeyo-Ikawa<sup>1,2\*</sup>, Nelson Onzere Amugune<sup>1</sup>, Norman Chege Njoroge<sup>1</sup>, Pauline Asami<sup>2</sup> and Timothy Holton<sup>2</sup>

<sup>1</sup>University of Nairobi, School of Biological Sciences, P. O. Box 30197 – 00100, Nairobi Kenya.

<sup>2</sup>Biosciences Eastern and Central Africa – International Livestock Research Institute (BecA-ILRI) Hub, P. O. Box 30709 – 00100, Nairobi Kenya.

Received 12 February, 2016; Accepted 29 June, 2016

**Cowpeas (*Vigna unguiculata*) are important grain legumes grown by resource poor farmers across Sub-Saharan Africa. In Kenya, cowpeas continue to produce low yields due to erratic rainfall caused by the current climate change. This study sought to enhance drought tolerance in Kenyan cowpeas through transformation by *Agrobacterium tumefaciens* using L-Pyrroline-5-carboxylate synthase (P5CS) gene. Cowpea variety K80 was inoculated with *Agrobacterium tumefaciens* strains EHA105 and LBA4404 harbouring recombinant plasmids pCAMBIA1301:VuP5CS or pCIP100:VuP5CS through vacuum infiltration of pre-germinated seeds at 60 kpa for 25 min. The presence of the transgene in the transformed cowpea plants and its transfer to progeny was confirmed by PCR analysis of T<sub>0</sub> and T<sub>1</sub> plants. The highest transformation efficiency of 20.5% was achieved with strain EHA105 harbouring plasmid pCAMBIA1301:VuP5CS. A segregation analysis of the transgenes gave a 1:4 ratio for the VuP5CS transformed: non-transformed plants and did not follow the 3:1 Mendelian inheritance pattern for dominant genes. There was no difference in proline content in the transformed and non-transformed T<sub>1</sub> plants. However, the roots of the transformed plants were significantly longer than those of the non-transformed plants. The numbers of harvested seeds were also significantly higher in the transformed plants with 10 to 11 seeds per pod in comparison to the non-transformed plants with an average of 5.58 seeds per pod, indicating drought tolerance potential of the transformed plants. The T<sub>2</sub> and T<sub>3</sub> plants need to be screened further to evaluate the stable integration of the transgene and physiological characterization under water stress.**

**Key words:** *Vigna unguiculata*, in planta transformation, *Agrobacterium tumefaciens*, VuP5CS (*Vigna unguiculata* pyrroline-5-carboxylate synthase).

### INTRODUCTION

Cowpeas are an important grain legume grown widely in Kenya with the bulk of the production being from the rural poor. It has high nutritional value with crude protein comprising about 25% of the seed dry weight (Tshovhote et al., 2003), and leaves which are harvested when

young, are used as vegetables rich in vitamin B and folic acid (Ogunmodede and Oyenuga, 1970). Cowpeas are also used as fodder for livestock and are a good rotation crop. Apart from its nutritional value, cowpeas act as a source of income for several rural households who sell

their surplus produce in the market. According to Singh *et al.* (2003), the haulms of cowpeas are dried on roof tops and sold as fodder in the dry season, fetching between 50-80% of the seed price on dry weight, thus, providing a good source of income. As a cover crop, cowpeas help in suppressing weeds and also being a leguminous crop, that helps in fixing nitrogen in the soil. It therefore acts as a soil conditioner, improving soil fertility. Most importantly, cowpeas have the ability to tolerate poor soil conditions (Popelka *et al.*, 2004).

Africa produces 92% of cowpeas globally, where approximately 200 million people consume it on a daily basis (Popelka *et al.*, 2004). Nigeria is the leading producer and consumer of cowpeas worldwide, with an estimated annual production of 2.4 million tons grown on 5 million hectares, followed by Niger, Brazil and USA (USAID, 2010). Cowpea productivity in Kenya has been extremely low, with yields ranging between 102 to 239 Kg/Ha, which is far less than the potential yields of 1200 to 1800 Kg/Ha according to a study by Kimiti *et al.* (2009). The low yields were attributed to poor soil fertility, weeds such as the parasitic *Striga gesnerioides* and *Alectra vogelii*, inadequate farm inputs and long dry spells which was experienced by 96% of households interviewed. The Kenya Agricultural and Livestock Research Organization (KALRO) has done a lot of research on cowpeas focusing on disease and insect pests (Karanja *et al.*, 2012) to reduce loss of produce. Most breeding programs have focused on increasing crop yields which may counteract the conservative strategies acquired through evolution to protect plants against water stress which is found in their wild relatives (Tardieu, 2012).

Although, cowpeas are known to be drought tolerant, Fatokun *et al.* (2009) showed that there was variation of drought tolerance among germplasm lines. The International Institute of Tropical Agriculture (IITA) and the Institut Senegalais de Recherches Agricoles (ISRA) have conventionally bred early maturing high yielding cowpea cultivars (IT84S-2246, Bambey 21) to escape drought, and these have been widely adopted by farmers. These varieties however performed poorly when exposed to drought during the reproductive stages (Agbicodo *et al.*, 2009). According to Shinozaki and Shinozaki (1997), a number of genes induced during water stress produce important metabolic proteins to protect cells from water deficit as well as regulate genes for signal transduction in response to water stress. These gene products are classified in two groups, functional and regulatory proteins. Proline is one of the functional proteins in plants involved in water stress tolerance and cellular adaptation (Shinozaki and Shinozaki, 1997).

In several higher plants including cowpeas, proline has

been found to accumulate in reproductive organs and tissues during drought, suggesting its role in providing energy during the reproductive phase (Bates *et al.*, 1973; Szabados and Savoure', 2009; Gazendam and Oelofse, 2007). This is due to the catabolism of proline which occurs in the mitochondria, and is connected to oxidative respiration providing energy for plants to resume growth after stress. Proline is also an important regulator of cellular reactive oxygen species (ROS) balance, influencing programmed cell death (Szabados and Savoure', 2009), and protects plant cells from damage due to oxidative stress (Gill and Tuteja, 2010). Thus, one option of enhancing proline biosynthesis so as to improve tolerance to drought is by increasing expression of rate-limiting genes in transgenic plants (Szabados and Savoure' 2009). The rate limiting catalyst in the proline biosynthetic pathway is pyrroline-5-carboxylate synthase (P5CS) which uses glutamate as a substrate (Kishor *et al.*, 2005). Based on the fact that cultivated cowpea varieties are self-pollinated, the cowpea genome therefore has a narrow gene pool. The application of plant transformation can thus be useful, in that only the gene of interest is transferred to the plant, while other desirable traits are maintained.

There are reports on tissue culture and regeneration of cowpeas (Raveendar *et al.*, 2009; Bakshi *et al.*, 2011) as well as transformation (Solleti *et al.*, 2008; Higgins *et al.*, 2013). *Agrobacterium* mediated transformation has been used in the recent years to deliver crop varieties with insect pest resistance, herbicide resistance, bio-fortified crops among others. *Agrobacterium*-mediated transformation has been preferred as a gene delivery method over biolistics in plant transformation as it is cheaper and results in higher transformation efficiencies. Complex gene integration patterns as well as insertion of multiple copies with biolistics makes it less favourable in plant transformation as it could lead to gene silencing (Kikkert *et al.*, 2005). In cowpeas, transformation has been achieved through inoculation with *Agrobacterium* suspension of embryo axis (Adesoye *et al.*, 2010), cotyledonary nodes (Bakshi *et al.*, 2011; Higgins *et al.*, 2013) with average transformation efficiencies ranging between 0.1 to 3.9%. Higgins *et al.* (2013) successfully transformed West African cowpea varieties with the *Bacillus thuringiensis* (Bt.) insect resistant gene to protect against pod borers. Other cowpea genotypes which have been successful in tissue culture and transformation studies include Pusa komal (Bakshi *et al.*, 2011), Cheng-jiang VII (Tang *et al.*, 2012), IITA cultivars and Nigerian landraces (Ilori and Pellegrineschi 2011). However, there has been no documented attempt in the improvement of Kenyan cowpea varieties through transformation.

Low transformation efficiency is characteristic in grain

\*Corresponding author. E-mail: rachel@ikawa.info. Tel: +254 20 444 2067, +254 722 100 487.

**Table 1.** Primers designed for PCR analysis of transgenes.

Primer name	Primer sequence
<i>gusA</i> gene forward primer	5' CTG ATA GCG CGT GAC AAA AA 3'
<i>gusA</i> gene reverse primer	5' GGC ACA GCA CAT CAA AGA GA 3'
<i>np11</i> gene forward primer	5' AGA CAA TCG GCT GCT CTG AT 3'
<i>np11</i> gene reverse primer	5' AGT GAC AAC GTC GAG CAC AG 3'
<i>hpt</i> gene forward primer	5' CCA CTA TCG GCG AGT ACT TCT ACA CAG C 3'
<i>hpt</i> gene reverse primer	5' GCC TGA ACT CAC CGC GAC GTC TGT C 3'
<i>VuP5CS</i> forward primer	5' CAT CAA CCA TGG AAC TTC TCC AAA ATG G 3'
<i>VuP5CS</i> reverse primer	5' TCC GAT GGT CAC CTG GAA AAA AGG 3'

legumes including cowpeas. Higgins et al. (2013) achieved a transformation efficiency of 0.3% when cotyledonary node explants were transformed with a plasmid containing the herbicide resistance *bar* gene, while Popelka et al. (2006) achieved a transformation efficiency of 0.1% with one fertile plant in a thousand explants transmitting the *bar* gene, encoding resistance to phosphinothricin, to their progeny. Bakshi et al. (2011) achieved 3% transformation efficiency of cowpea cotyledonary node explants transformed with the *np11* selectable marker gene using vacuum infiltration and sonication with transformed explants selected on medium containing kanamycin. In the transformation of *Vigna mungo*, a close relative of cowpeas, Saini et al. (2003) only achieved a transformation frequency of 1% when they transformed cotyledonary nodes with plasmid pCAMBIA2301.

This study sought to enhance drought tolerance in Kenyan cowpeas through *Agrobacterium* mediated transformation with the *VuP5CS* gene. According to Mao et al. (2006), although several cowpea cultivars had been explored for their shoot organogenesis potential, the studies indicated that the regeneration of cowpeas *in vitro* was genotype specific, requiring the optimization of tissue culture conditions for each individual genotype. To address this challenge, the *in planta* cowpea seed transformation was considered as an alternative to omit the tissue culture stage of regenerating whole plants. The *VuP5CS* gene was selected for this study as it naturally occurs in cowpea plants and would therefore be more acceptable to farmers as opposed to introduction of foreign genes which has been battled in the production of other transgenic crops in Kenya. This study could aid in achieving cowpea varieties with tolerance to biotic and abiotic stresses hence, delivering higher yield for farmers.

## MATERIALS AND METHODS

### Study location

The study was carried out at the Biosciences Eastern and Central Africa (BecA) – International Livestock Research Institute (ILRI) hub In Nairobi, Kenya with the GPS co-ordinates 1°16'07.5"S

36°43'21.1"E.

### Bacterial culture

*Agrobacterium* culture medium was prepared using low salt Luria Bertani agar (LBA – Duchefa Biochemie BV.) at 30 g/L and autoclaving at 121°C for 20 min. Filter sterilized antibiotics were added to the media after cooling under a micro flow cabinet as follows: 50 mg/L kanamycin, 50 mg/L rifampicin and 100 mg/L streptomycin. The medium was then dispensed into Petri dishes and after solidifying, 1.0 µL of glycerol stocks of pCAMBIA 1301 and pCIP100 retrieved from 80°C freezer was streaked onto the medium. These were sealed with parafilm and incubated at 28 °C for 48 hrs.

Liquid Luria Bertani (LB) nutrient medium was prepared by dissolving 40 g of LB broth (Duchefa Biochemie BV.) in 1.0 L of distilled water and autoclaved. After cooling, 10 mL of the liquid LB medium was measured into 50 mL falcon tubes and the filter sterilized antibiotics kanamycin and rifampicin added at 50 mg/L each. A pipette tip was used to pick a colony of *Agrobacterium* from the 48 hr culture and dipped into the liquid LB medium contained in the falcon tubes and sealed with parafilms. The tubes were incubated on a shaker overnight at 28°C and a rotor speed of 225 rpm.

### Plasmid isolation

Plasmids were isolated from the overnight *Agrobacterium* cultures using the GeneJet plasmid miniprep kit (Thermo Fisher Scientific Inc.) following the manufacturers' instructions to confirm the presence of the plasmids pCAMBIA 1301 and pCIP100. The extracted plasmid DNA was quantified using the NanoDrop™ 2000 UV-Vis spectrophotometer (Thermo Fischer Scientific Inc.) to check the quantity and quality of the DNA and the *np11*, *hpt* and *gusA* gene fragments PCR amplified using specific primers (Table 1), to confirm the presence of the selectable marker genes in the plasmids. Using the plasmid map for plasmid pCAMBIA 1301, restriction enzymes *NcoI* and *BstEII* were selected to cleave the 2 kb length of the *gusA* gene between the 35S promoter and the NOS terminator. Restricted plasmid DNA was de-phosphorylated using alkaline phosphatase at 1.0 µL/µg of digested DNA to avoid re-ligation and incubated at 37°C for 30 min followed by heat inactivation at 65°C for 5 min. The *VuP5CS* gene was PCR amplified using *VuP5CS* specific primers (Table 1) and purified using GeneJET PCR purification kit according to the manufacturer's instructions. The purified PCR product was digested with the *BstEII* and *NcoI* restriction enzymes and ligated to the restricted and de-phosphorylated vector backbones of pCIP100 and pCAMBIA 1301 in the ratio of 1:3 (vector: insert = 30 ng:90 ng) using T4 DNA ligase



and incubated overnight at 4°C.

### **Agrobacterium transformation**

Two strains of *Agrobacterium tumefaciens*, LBA4404 and EHA105 were transformed with the recombinant plasmids pCIP100:VuP5CS and pCAMBIA 1301:VuP5CS through electroporation and cultured in LBA with kanamycin and rifampicin at 50 mg/L each for 48 hrs at 28 °C. For selection of strain LBA4404, 100 mg/L of streptomycin was added to the bacterial selection medium. After 2 days of culture, the colonies which were able to grow were individually picked with a pipette tip and cultured in liquid LB medium with the same antibiotic concentrations. Plasmid DNA was isolated and PCR amplified with VuP5CS, *npII*, *hpt* and *gusA* specific primers. Plasmid DNA whose samples had positive PCR amplification for the transgenes were digested with *NcoI*/*BstEII*, *EcoRI* and *HindIII* enzymes to confirm the presence of the VuP5CS gene. The double digest with *NcoI* and *BstEII* was expected to give 2 fragments, one which is 9 kb and another of 2.4 kb, the size of the VuP5CS gene. On the other hand, a double digest with *EcoRI* and *HindIII* was expected to result in 3 fragments of 8 kb, 2.3 kb and 616 bp (*EcoRI*) or 333-bp (*HindIII*) because both enzymes have two recognition sites within the VuP5CS gene sequence.

*Agrobacterium* cultures exhibiting the presence of the recombinant plasmids pCIP100:VuP5CS and pCAMBIA 1301:VuP5CS were refreshed in an overnight culture with 5 µL cultured in 10 mL of the liquid LB medium in a 50 mL falcon tube with kanamycin and rifampicin added at 50 mg/L each. The tubes were incubated on a shaker overnight at 28°C and a rotor speed of 225 rpm and used for seed transformation.

### **Inoculation of cowpea seeds**

Cowpea *in planta* seed transformation by vacuum infiltration was modified from De Ronde et al. (2001). Seeds of cowpea variety K80 were surface sterilized with 2 washes using 70% ethanol followed by 1% sodium hypochlorite for 30 min. Sterile seeds were germinated in Petri plates lined with sterile filter paper moistened with sterile distilled water. After 2 days, the seed coat was removed and the seeds vacuum infiltrated for 25 min at 60 kpa with the inoculation medium containing *A. tumefaciens* cultures grown overnight. The *A. tumefaciens* cultures strain EHA105 or LBA4404 with plasmids pCAMBIA1301:VuP5CS, pCIP100:VuP5CS, pCAMBIA1301 or pCIP100 were resuspended in liquid co-cultivating medium (LCM) comprising of MSB5 medium supplemented with 30 g/L sucrose made up to 1 L and pH adjusted to 5.8 with no solidifying agents, followed by autoclaving. After cooling, filter sterilized growth regulators BAP and GA<sub>3</sub> were added at 0.5 mg/L and 0.25 mg/L respectively, and thiol compounds dithiothreitol (DTT) at 150 mg/L and 0.4 mg/L L-cysteine, with 20 mM 2-morpholinoethanesulphonic acid (MES) to act as a pH buffer. This was supplemented with 200 µM acetosyringone. Inclusion of thiol compounds L-cystein and DTT in the inoculation and co-cultivation medium enhance gene transfer and reduce browning of wounded explants (Popelka et al., 2006; Higgins et al., 2013). Tween 20 (0.02%) was added to the LCM as a surfactant/wetting agent.

Five sets of treatments and control were carried out with the inoculums having different recombinant plasmids in different strains of *Agrobacterium* grown overnight as follows:

- 0) *Agrobacterium tumefaciens* strain LBA4404 with no plasmid as a negative control.
- 1) *Agrobacterium tumefaciens* strain LBA4404 with pCAMBIA 1301.
- 2) *Agrobacterium tumefaciens* strain LBA4404 with pCAMBIA1301:VuP5CS.

- 3) *Agrobacterium tumefaciens* strain EHA105 with pCIP100.
- 4) *Agrobacterium tumefaciens* strain EHA105 with pCAMBIA 1301:VuP5CS.
- 5) *Agrobacterium tumefaciens* strain EHA105 with pCIP100:VuP5CS

The inoculated pre-germinated seeds (Treatment 0: 27 seeds; Treatment 1: 36 seeds; Treatment 2: 44 seeds; Treatment 3: 38 seeds; and 45 seeds each for Treatments 4 and 5) were left in the inoculums for 2 h and planted in sterile vermiculite. After 3 days, the first set of leaves was visible and one week later the seedlings were transplanted in sterile soil with farmyard manure in the ratio of 1:1. Leaf samples were taken from the second set of trifoliate leaves of plants from treatments 2, 4 and 5 for PCR analysis of transgenes. Samples from treatments 1 and 3 were used for GUS histochemical assay while samples from treatment 0 were used as a negative control.

The potted plants were allowed to set seed in the greenhouse and a few seeds from the PCR positive T<sub>0</sub> plants planted to generate T<sub>1</sub> plants. A GUS histochemical assay and PCR analysis was done on the T<sub>1</sub> plants to analyse the presence of the *uidA*, *npII* or *hpt* genes.

### **Analysis of transformed plants**

#### **GUS histochemical assay**

The GUS histochemical assay was modified from Jefferson et al. (1987). GUS assay buffer solution (1 mL) containing 100 µL x-gluc (5-bromo-4-chloro-3-indolyl-β-D-glucuronic acid), 890 µL Tris-NaCl and 10 µL of 10% triton, was added to the apical leaf in the second set of trifoliate leaves generated from inoculated seeds in 2 mL eppendorf tubes. The tubes were wrapped in aluminium foil and incubated at 37°C for 24 h. The treated leaves were washed with 70% ethanol, and the wash repeated every 24 h for 3 days to wash off the chlorophyll.

A second GUS assay was carried out using whole plants of 2 week old T<sub>1</sub> seedlings of seeds from a single pod of a PCR positive T<sub>0</sub> plant where seeds were inoculated with *A. tumefaciens* strain EHA105 with pCIP100 having the *gusA* reporter gene (treatment 3). Seeds harvested from a T<sub>1</sub> plant from treatment 3 were also subjected to the GUS histochemical assay.

#### **Molecular characterization of transformed plants**

DNA was extracted from leaf discs of shoots generated from seeds transformed with *A. tumefaciens* harbouring the plasmids pCIP100, pCAMBIA1301, pCIP100:VuP5CS or pCAMBIA:VuP5CS and non-transformed cowpea plants using the CTAB method modified from Doyle (1987). DNA extraction buffer was prepared with 2% CTAB, 10 mL of 1 M Tris-HCl, 4 mL of 0.5 M EDTA, 28 mL of 5 M NaCl and 38 mL of distilled water. β-mercaptoethanol (2 mL) was added last in a fume chamber to make a total of 100 mL of extraction buffer.

Three week old transformed and non-transformed plants were used with leaf samples taken from the apex of the second set of trifoliate leaves from all treated plants from the 5 treatments. Samples were immediately wrapped in labelled aluminium foil and placed in liquid nitrogen. The samples were ground using autoclaved mortar and pestle and transferred to a 50 mL falcon tube with 12 mL of 2% CTAB extraction buffer (pre-warmed at 65°C) added and vortexed for 10 s. Samples were then incubated at 65°C for 30 min with inverting every 10 min and at room temperature for 10 min. Twelve mL (equal volume to the CTAB extraction buffer used) of isopropanol: chloroform (1:24) was added in a fume chamber and gently mixed for 10 min. The mixtures were

centrifuged at 3000 rpm for 10 min and about 12 mL of the aqueous phase transferred to a clean 50 mL falcon tube, and precipitated with 8.4 mL (70% of the volume) of isopropanol, followed by overnight incubation at  $-20^{\circ}\text{C}$ .

DNA was pelleted by centrifugation at 14000 rpm at room temperature for 10 min. The pellet was washed with 1 mL of 70% ethanol in a centrifuge at 13,200 rpm and  $4^{\circ}\text{C}$  for 5 min, followed by an additional spin to remove residual ethanol. The tubes were air dried at room temperature in a clean air flow cabinet for 30 min and the pellet resuspended in 1 mL of 1 M NaCl and incubated for 15 min at  $37^{\circ}\text{C}$ . RNase A (4  $\mu\text{L}$  of 1 mg/mL) was added to the DNA solution and incubated at  $37^{\circ}\text{C}$  for 45 min. This was transferred to clean falcon tubes and 3 mL (3 volumes) of absolute ethanol added to the DNA solution and incubated for 30 min at  $20^{\circ}\text{C}$  to precipitate DNA. The jelly-like DNA precipitate was looped using a pipette tip and transferred to a 2 mL eppendorf tube. The pellet was washed two times with 70% ethanol to remove excess salts and air dried for 30 min in a clean air flow cabinet. The pellet was eluted in 30  $\mu\text{L}$  nuclease free water and DNA concentration quantified using a nanodrop.

### Agarose gel electrophoresis

The extracted DNA was subjected to agarose gel electrophoresis to check the integrity of the DNA with 5  $\mu\text{L}$  of DNA loaded onto agarose gel [1% w/v agarose in 0.5 X TBE buffer stained with 2.5  $\mu\text{L}$  GelRed™ (Biotium)] and 6  $\mu\text{L}$  of 100 bp ladder loaded in the first lane. The gel was run at 100 V for 45 min and visualized using a UV transilluminator and the image captured for analysis of the DNA.

### Polymerase chain reaction (PCR) analysis.

The *nptII*, *hpt* and *gusA* specific primers were used in screening for the presence of the transgenes in the DNA extracted from transformed and non-transformed plants. A master mix was prepared by adding 0.4  $\mu\text{L}$  each of the *nptII*, *hpt* or *gusA* forward and reverse primers (10 ng/ $\mu\text{L}$ ) to 18.2  $\mu\text{L}$  of nuclease free water to make a total volume of 19  $\mu\text{L}$ . This was added into the 20  $\mu\text{L}$  reaction Bioneer AccuPower® PCR Premix followed by the addition of 1  $\mu\text{L}$  of extracted DNA. In two separate tubes, 2  $\mu\text{L}$  of plasmid DNA containing the *nptII* gene (positive control) or water (negative control) were added and the mixtures vortexed for 5 s followed by a 5 s centrifugation.

The PCR amplification was carried out in a thermal cycler with the initial denaturation at  $95^{\circ}\text{C}$  for 5 min; denaturation, annealing and extension at  $95^{\circ}\text{C}$ ,  $58^{\circ}\text{C}$  and  $72^{\circ}\text{C}$  respectively for 30 s with 35 cycles each; final extension at  $72^{\circ}\text{C}$  for 10 min. The PCR program for amplification of the *hpt* gene fragment using plant DNA from putative transformed plants was optimized with the annealing and extension time set at 1 min each. For amplification of the *nptII* fragment, the denaturation and annealing durations were increased to 45 s and 2.5 min for the extension respectively, with an annealing temperature of  $62^{\circ}\text{C}$ .

### Measurement of proline levels in cowpea leaves

The ninhydrin test was used in analyzing the quantity of free proline amino acids. When heated with ninhydrin, they form a purple blue coloured Hydrantion compound which is measured colorimetrically (Amanullah, 2011). Proline concentration in leaves obtained from *T*<sub>1</sub> plants of *in planta* seed transformation was measured using a modified protocol by Bates et al. (1973) to determine the levels of free proline in leaf tissues. The protocol is based on the formation of red colored formazone by proline with ninhydrin in acidic medium, which is soluble in organic solvents like toluene.

A standard curve of proline was prepared using a serial dilution of 1 mL of L – proline in 3% sulphosalicylic acid at 1, 10, 50, 100, 150, 200, 250 and 300  $\mu\text{M}$ . Using a fume chamber, 500  $\mu\text{L}$  of each dilution was added to 500  $\mu\text{L}$  of glacial acetic acid and 500  $\mu\text{L}$  ninhydrin reagent (2.5 g Ninhydrin, 60 mL glacial acetic acid and 40 mL 6 M phosphoric acid dissolved at  $70^{\circ}\text{C}$  and stored in the dark for not more than 24 h.) in a 15 mL falcon tube and boiled for 45 min in a water bath and then cooled on ice for 30 min. An equal volume of toluene was added to each sample, vortexed for 1 min and centrifuged at 700 rpm for 5 min. The optical density of the toluene solution was measured at 520 nm using a spectrophotometer. The measurements were used to make a standard curve for proline. Two hundred milligrams of frozen plant tissue from *T*<sub>1</sub> plants transformed with plasmids pCIP100:VuP5CS or pCAMBIA1301:VuP5CS and non-transformed plants were grinded separately using a micro pestle in an eppendorf tube and homogenized in 2 mL of 3% sulphosalicylic acid. The homogenized leaf samples were centrifuged at 4000 rpm for 5 min and 500  $\mu\text{L}$  of the supernatant treated with 500  $\mu\text{L}$  of ninhydrin reagent and 500  $\mu\text{L}$  of glacial acetic acid. The optical density of the toluene solution was measured at 520 nm and the proline content calculated using the standard curve.

The gradient from the standard curve generated ( $y = 357.9x + 8.211$ ) was used in calculating the concentration of proline in the measured samples. To calculate the concentration of proline per gram fresh weight, the following formula was applied according to Bates et al. (1973).

$$[(\mu\text{M proline} \times \text{mL toluene} / 115.5 \mu\text{g}/\mu\text{M}) / ((\text{g sample}) / 2)] = \mu\text{M proline} / \text{g of fresh weight material}$$

Where:  $\mu\text{M proline}$  is worked out from the optical density using the gradient from the standard curve, mL toluene is the volume of toluene used, 115.5  $\mu\text{g}/\mu\text{M}$  is the molarity of proline, g sample is the weight of the leaf sample used and 2 is the volume of sulphosalicylic acid used to homogenize the ground leaf samples.

### Physiological analysis of transformed plants

After the *T*<sub>1</sub> plants had set seed, watering was withdrawn from both the transformed and non-transformed plants. After 3 weeks of water withdrawal, the pods were harvested and plants carefully removed from the soil to ensure their roots didn't break. A total of 8 randomly selected plants transformed with plasmid pCIP100:VuP5CS and 8 non-transformed plants as well as 4 plants transformed with *A. tumefaciens* strain LBA4404 with no plasmid from treatment 0 had their root lengths measured and recorded. The number of seeds harvested from the transformed and non-transformed plants from each pod was also counted and recorded. A one way analysis of variance (ANOVA) was applied using R statistical software to separate the means.

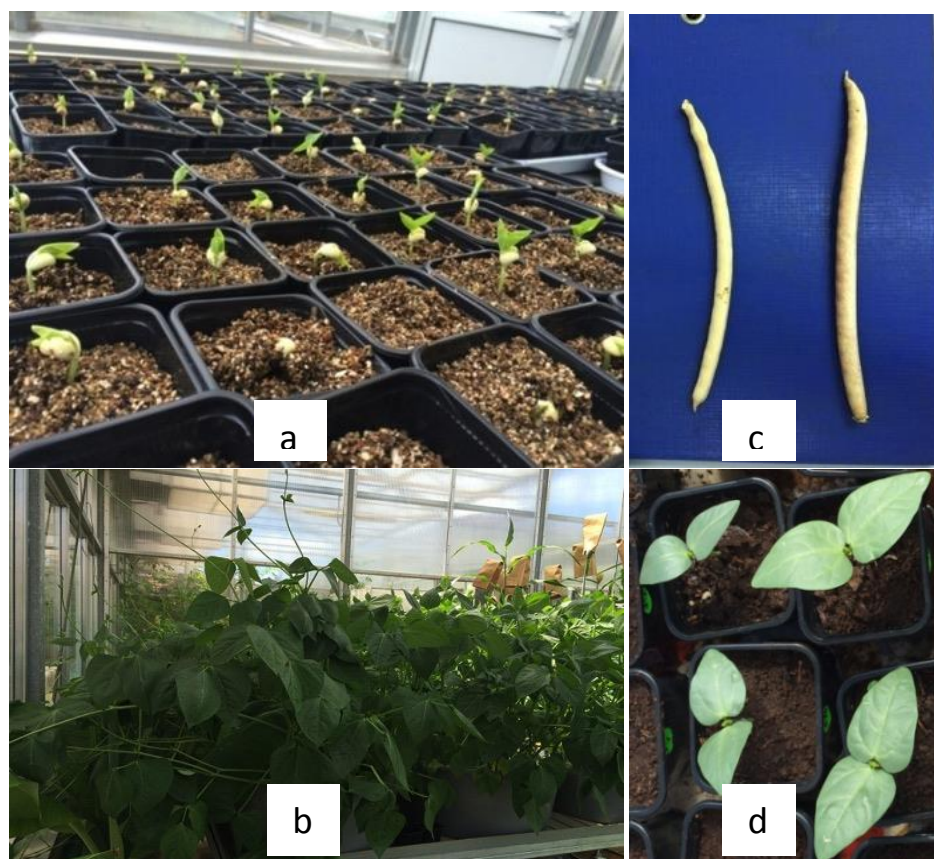
## RESULTS

### Germination and generation of *T*<sub>1</sub> cowpea plants from *in planta* seed transformation

Cowpea seeds inoculated with *A. tumefaciens* strain EHA105 harbouring the recombinant plasmids pCIP100:VuP5CS or pCAMBIA1301:VuP5CS germinated after 3 days in vermiculite with the germination in all the treatments being between 41 and 92% (Table 2). Seeds inoculated with *A. tumefaciens* strain LBA4404 had lower germination compared to those inoculated with strain EHA105 with the lowest germination of 41% being from

**Table 2.** Germination of seeds inoculated with *Agrobacterium tumefaciens* strains LBA4404 or EHA105 harbouring different recombinant plasmids by vacuum infiltration.

Experiment No.	<i>A. tumefaciens</i> strain	Plasmid	No. of seeds inoculated	No. of seeds germinated	Germination (%)
0	LBA4404	–	27	11	41
1	LBA4404	pCAMBIA 1301	36	27	75
2	LBA4404	pCAMBIA 1301:VuP5CS	44	34	77
3	EHA105	pCIP100	38	35	92
4	EHA105	pCAMBIA 1301:VuP5CS	45	39	87
5	EHA105	pCIP100:VuP5CS	45	39	87

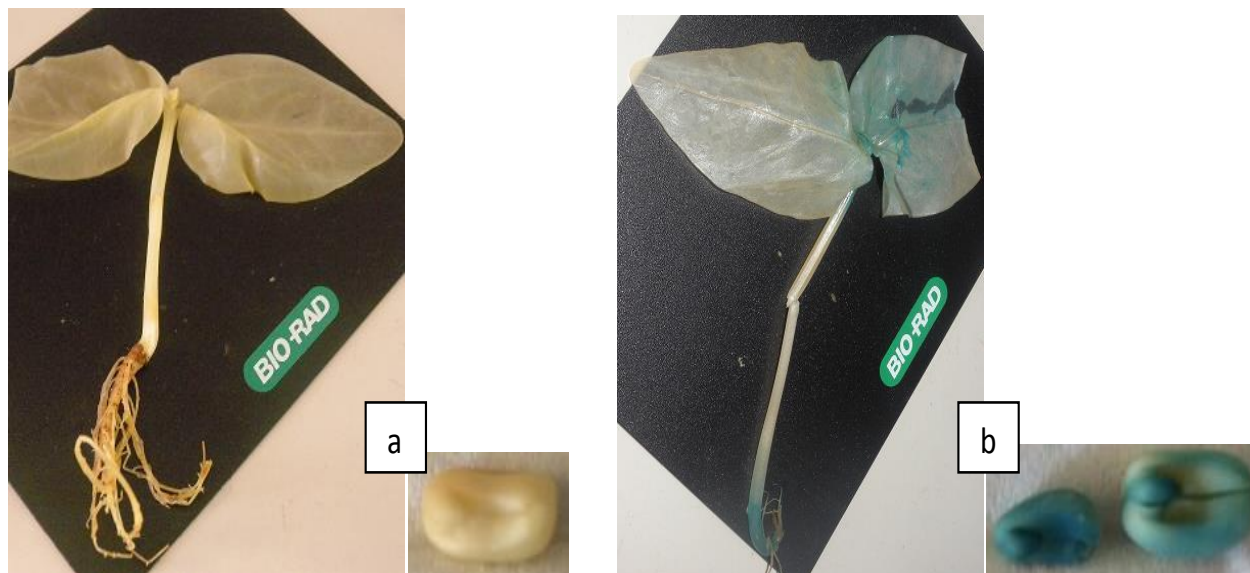


**Figure 1.** Generation of cowpea  $T_1$  plants from *in planta* seed transformation by vacuum infiltration. (a) Putative transformed seedlings 3 days after sowing in vermiculite; (b) Flowering plants two months after sowing. (c) Pods harvested 4 months after sowing. (d)  $T_1$  plants 7 days after sowing.

seeds inoculated with *A. tumefaciens* strain LBA4404 having no plasmid. All the seedlings which germinated grew to maturity and flowered normally, setting seed in four months (Figure 1). Pods were harvested at maturity and seeds from each pod stored in separate envelopes labelled with the plant number, pod number and number of seeds. The  $T_0$  seeds from PCR positive plants were used in generating  $T_1$  plants.

#### Expression of $\beta$ -glucuronidase activity in transformed cowpea plants

GUS histochemical analysis of plants from *in planta* cowpea seed transformation in 20 leaves sampled 2 weeks after germination showed no  $\beta$ -glucuronidase activity. However, 2 week old leaves from  $T_1$  plants sown from seeds which had shown no GUS activity in the  $T_0$



**Figure 2.** GUS assay of 2 week old  $T_1$  transformed and non-transformed cowpea plants, and seeds harvested from the  $T_1$  plants. (a) Non-transformed (control) plants showing no  $\beta$ -glucuronidase activity in shoots, roots and seed harvested from non-transformed plant; (b)  $\beta$ -glucuronidase activity expressed in the roots and leaf base of  $T_1$  plants transformed with *A. tumefaciens* strain EHA105 with plasmid pCIP100 and seeds harvested from  $T_1$  plants.

plants showed  $\beta$ -glucuronidase activity in 4 out of 14 plants sampled.

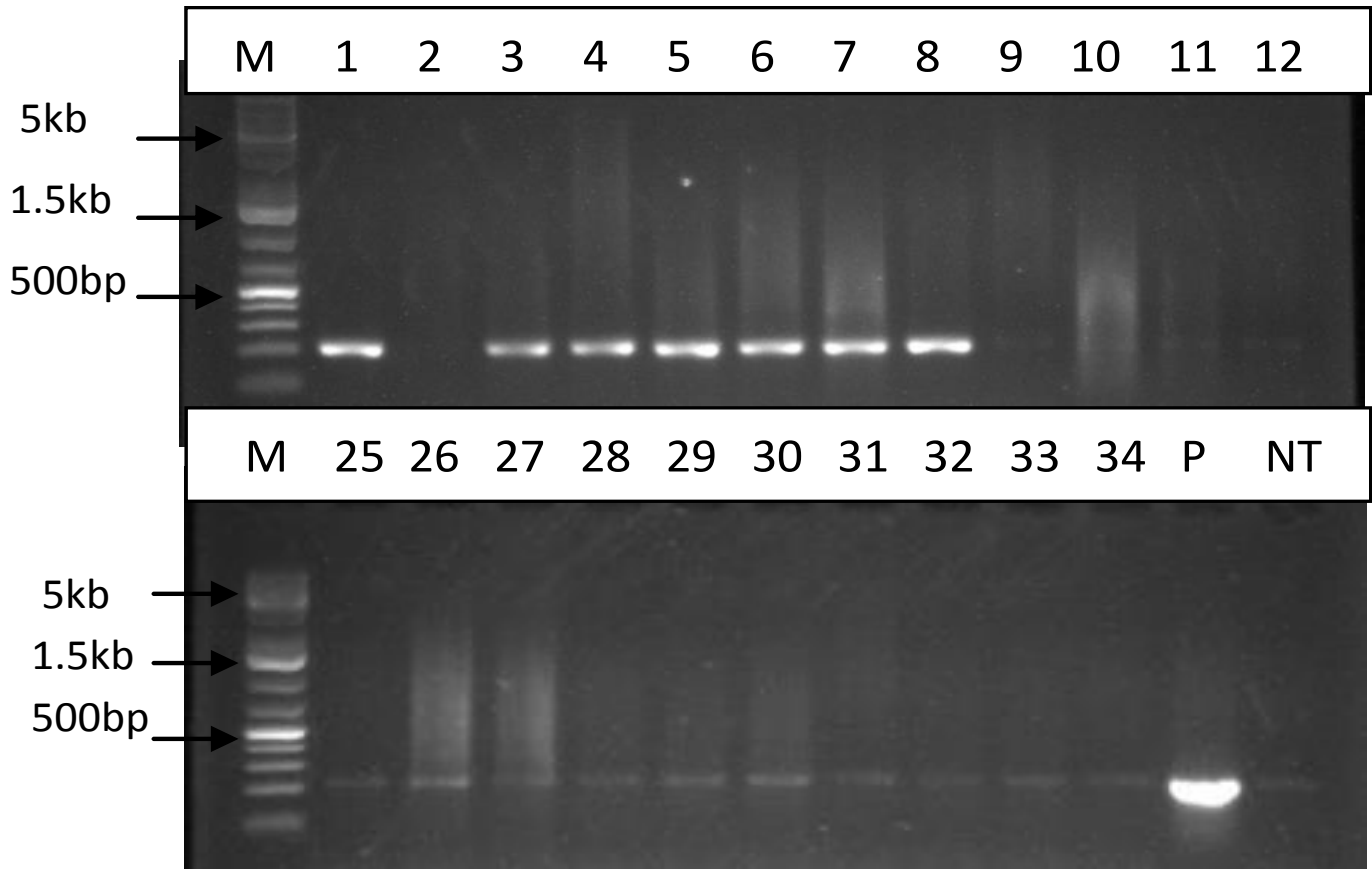
The GUS expression was observed in the root and leaf base with more intensity of the blue coloration seen in the roots (Figure 2). The blue coloration was not seen in the non-transformed plants assayed. The localization of the *gusA* gene where the  $\beta$ -glucuronidase activity is expressed explains why the GUS activity was not observed in the  $T_0$  leaf samples because samples were picked from the leaf tips of the seedlings. The segregation of the *gusA* gene was 1:3.5 (4:14) for the GUS positive: GUS negative plants. Analysis of seeds harvested from the  $T_1$  plants had all seeds from one pod exhibiting  $\beta$ -glucuronidase activity.

#### PCR analysis of transformed $T_0$ and $T_1$ plants from cowpea *in planta* seed transformation

PCR analysis carried out on DNA extracted from leaves of  $T_0$  plants grown from seeds transformed with *A. tumefaciens* strain EHA105 harbouring plasmids pCIP100 (treatment 3) resulted in 7 out of 35 plants amplifying the 215 bp fragment of *gusA* gene (Figure 3). Only samples whose *gusA* gene amplification showed strong bands were considered to be positive. PCR amplification of the 185 bp *nptII* gene fragment using DNA extracted from leaves obtained from germinated shoots from seeds inoculated with *A. tumefaciens* strain EHA105 harbouring plasmids pCIP100:VuP5CS (Treatment 5) showed 5 strong bands out of 39 different

leaf samples (Figure 4). The seeds from plants of lanes 9, 10, 12 and 18 in figure 4 were planted in soil with 2 pods having 8 and 7 seeds from plant 9, one pod having 9 seeds from plant 10, 2 pods with 14 and 10 seeds from plant 12 and 2 pods having 12 and 8 seeds from plant 18. The youngest leaf in the first set of trifoliolate leaves was used in the  $T_1$  PCR analysis (Table 3).

Transformation efficiency in  $T_0$  plants from cowpea seeds inoculated by vacuum infiltration was worked out as a percentage of the number of PCR positive plants over the total number of plants inoculated. However, it is worth noting that each of the 5 treatments had different gene constructs or strains of *A. tumefaciens*. Plants obtained from seeds inoculated with *A. tumefaciens* without a plasmid (treatment 0) were used as a control as well as non-transformed plants. Leaf samples from plants in treatment 1 where seeds were inoculated with *A. tumefaciens* strain LBA4404 harbouring plasmid pCAMBIA1301 were used in the GUS histochemical assay. Due to lack of space in the contained greenhouse facilities, the  $T_1$  plants could not be analyzed fully and only a few seeds from the PCR positive  $T_0$  plants from treatment 4 and 5 were analyzed for the inheritance of the transgene in the subsequent generation. Four leaf samples used were from a plant grown from seeds of a PCR positive  $T_0$  plant and were from the same pod. In the  $T_1$  plants from treatment 4, only 1 of the 4 samples had a definite positive amplicon for the 890 bp *hpt* gene fragment (Figure 5), showing the inheritance of the transgene to the progeny with an inheritance pattern of 1:4 for VuP5CS positive: VuP5CS negative.



**Figure 3.** PCR analysis of  $T_0$  plants transformed with *Agrobacterium tumefaciens* strain EHA105 harbouring plasmid pCIP100 (Treatment 3) showing PCR amplification of the 215 bp *gusA* fragment. Lane M: Molecular weight marker; lanes 1 – 34: genomic DNA extracted from transformed plants. Lane P: Plasmid DNA from pCIP100; Lane NT: DNA from leaves of non-transformed plants.

### Comparison of proline levels in $T_1$ leaves of transformed and non-transformed cowpea plants

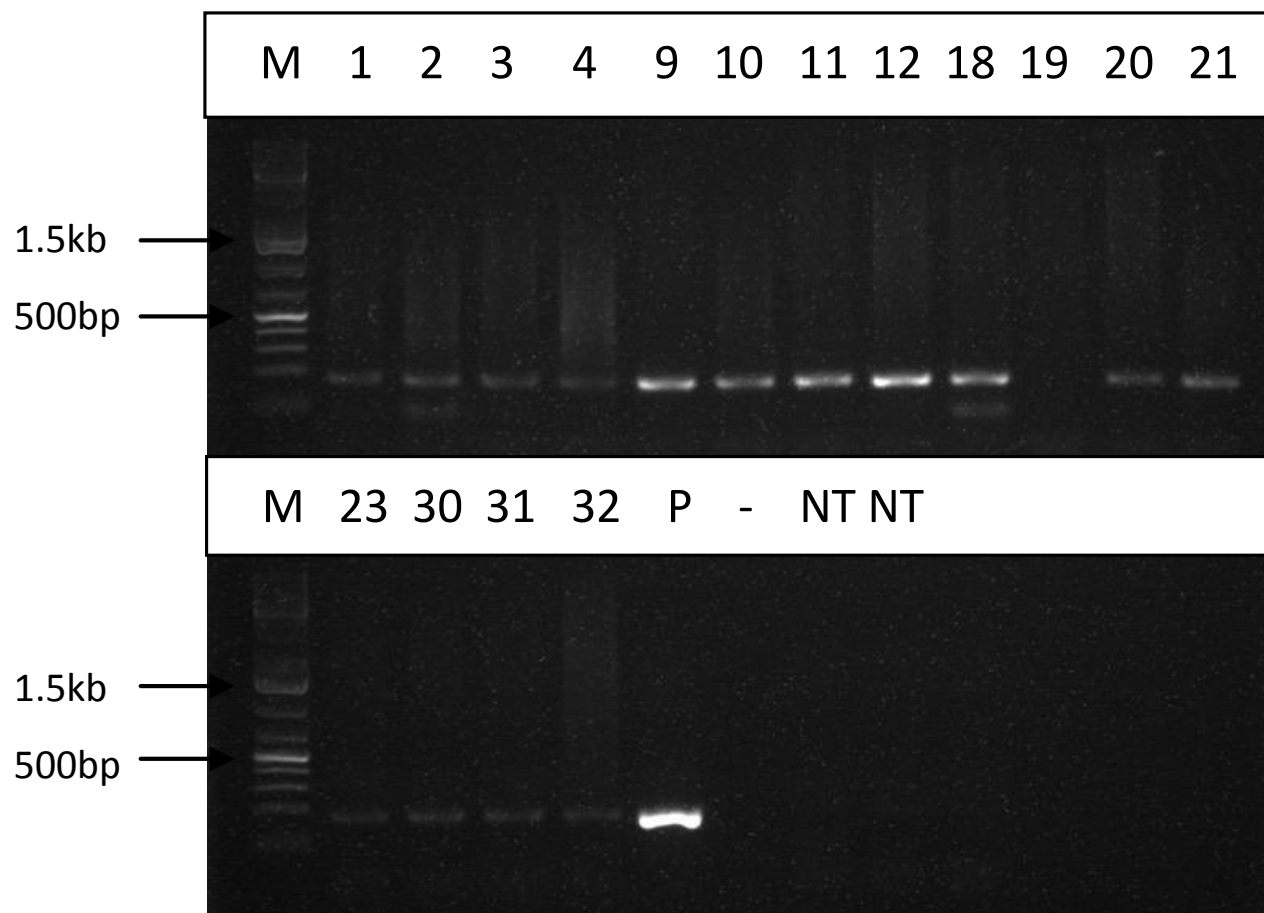
Serial concentration of L-proline at 1, 10, 50, 100, 150, 200, 250 and 300  $\mu\text{M}$  after ninhydrin treatment showed the brick red colour intensity as well as the optical density increasing proportionately to the molar concentration of L-proline (Figure 6). The brick red colour was most intense with the reaction between 300 $\mu\text{M}$  proline with acid ninhydrin reagent as illustrated in figure 6a. In figure 6b, the highest brick red intensity was observed with leaf from plant 10 pod b from treatment 5, where seeds were inoculated with *A. tumefaciens* strain EHA105 harbouring plasmid pCIP100:VuP5CS. The pink colouration was observed in all samples including in the non-transformed leaf samples as well as in leaves from plants transformed with *A. tumefaciens* with no plasmid indicating the natural occurrence of proline in cowpeas.

The standard curve (Figure 7) used to work out the concentration of L-Proline resulted in only one leaf sample from plants transformed with plasmid pCIP100:VuP5CS having higher proline concentration in comparison to the non-transformed plants (Figure 8). The proline

concentrations in figure 8 match the intensity of the red colouration seen in figure 6b with the highest proline concentration of 93.6  $\mu\text{M}/\text{g}$  fresh weight being in plant 5.10 pod b. The lowest proline concentration of 26.5  $\mu\text{M}/\text{g}$  fresh weight was in plants transformed with *A. tumefaciens* strain LBA4404 with no plasmid. The average proline concentration in the transformed leaf samples was 46.15  $\mu\text{M}/\text{g}$  fresh weight while the concentration in the non-transformed leaf samples was 41.14  $\mu\text{M}/\text{g}$  fresh weight. However, there was no significant difference in proline concentration between the transformed, non-transformed plants and plants transformed with *Agrobacterium* with no plasmid ( $F_{3,10} = 0.4551$ ,  $p = 0.7195$ ).

### Analysis of roots of transformed and non-transformed $T_1$ cowpea plants

Roots of  $T_1$  plants transformed with *A. tumefaciens* strain EHA105 with plasmid pCIP100:VuP5CS had well established primary and secondary roots which were significantly longer in comparison to the roots of both



**Figure 4.** PCR analysis of  $T_0$  plants transformed with pCIP100:VuP5CS (Treatment 5) showing PCR amplification of the 185 bp *nptII* fragment. Lane M: Molecular weight marker; Lanes 1 – 32: DNA from leaves of putative transformed seedlings; Lane P: Plasmid DNA from pCIP100; Lane -: Water, negative control; Lane NT: DNA from leaves of non-transformed plants.

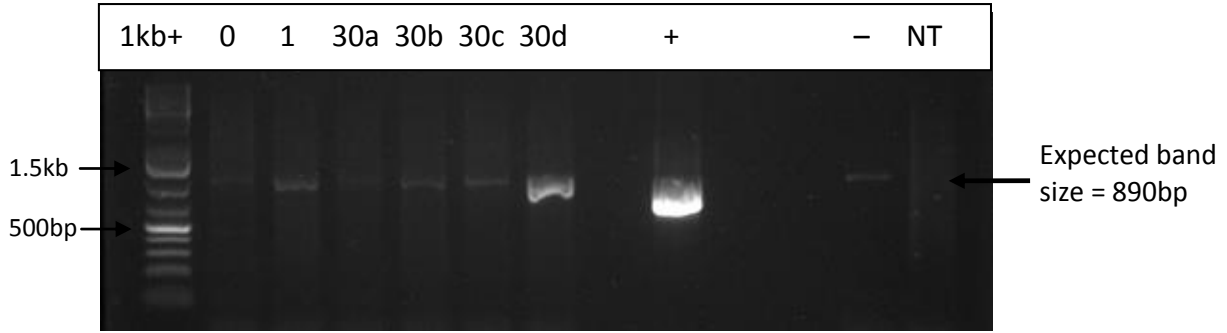
**Table 3.** Cowpea *in planta* seed transformation efficiencies of  $T_0$  plants from 4 treatments.

Parameter	Exp. 2	Exp. 3	Exp. 4	Exp. 5
No. of PCR positive plants $T_0$	3.0	7.0	8.0	5.0
No. of seeds inoculated	34.0	35.0	39.0	39.0
Transformation efficiency (%)	8.8	20.0	20.5	12.8

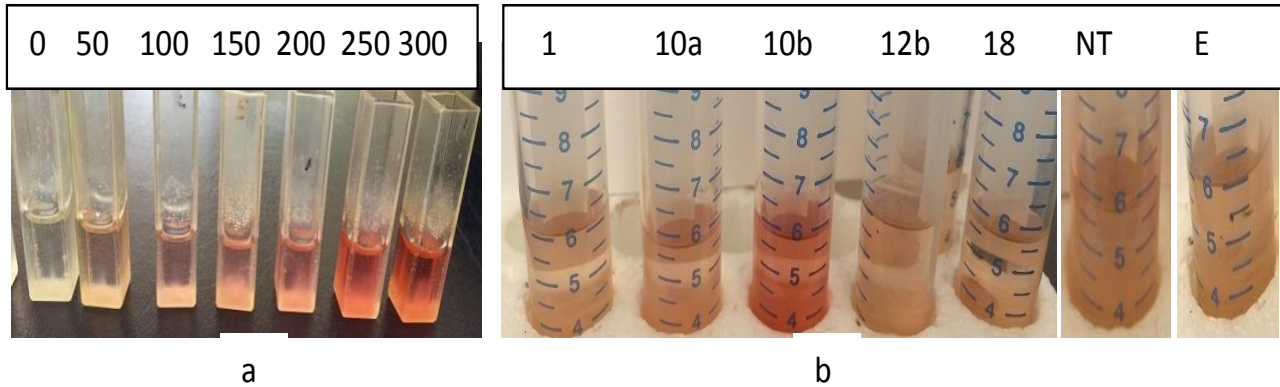
non-transformed plants and plants transformed with *A. tumefaciens* with no plasmid ( $F_{2,18} = 8.6423$ ,  $p = 0.00234$ ). Roots of the non-transformed plants were shorter with smaller secondary roots clumped together (Figure 9). The average root length of 8 transformed plants analysed was 22.6 cm, while the average root length of the non-transformed plants was 12.8 cm and 13.0 cm for plants transformed with *A. tumefaciens* with no plasmid. Nodulation was observed in the roots of both transformed and non-transformed plants.

Seeds harvested from VuP5CS transformed  $T_1$  plants were significantly more than the seeds harvested from

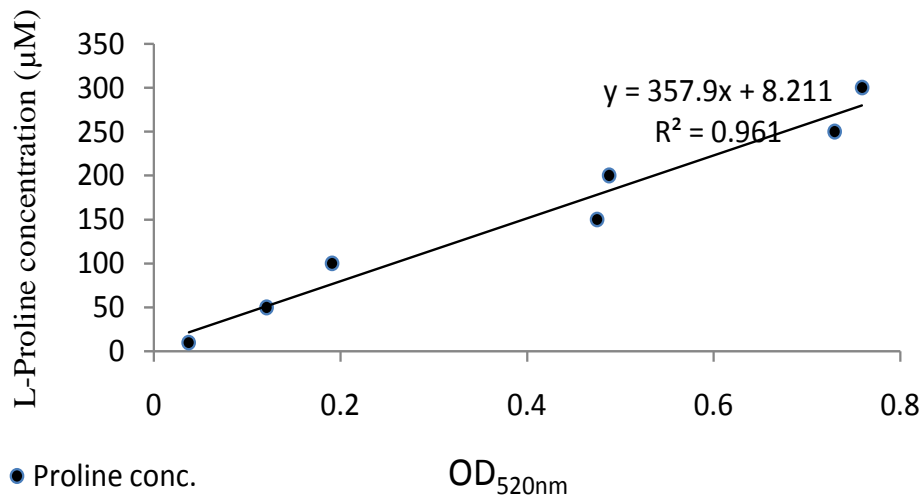
non-transformed plants and plants transformed with *A. tumefaciens* with no plasmid ( $F_{4,181} = 29.573$ ,  $p < 0.05$ ). There was an average of 10 to 11 seeds per pod from transformed plants while the non-transformed plants had an average of 5 seeds per pod (Table 4). A one way ANOVA using the R statistical software showed no variation in mean number of seeds per pod harvested from plants transformed with strain EHA 105 and LBA4404 or plasmids pCIP100:VuP5CS and pCAMBIA1301:VuP5CS. Similarly, there was no variation in mean number of seeds per pod harvested from non-transformed plants and those from plants transformed



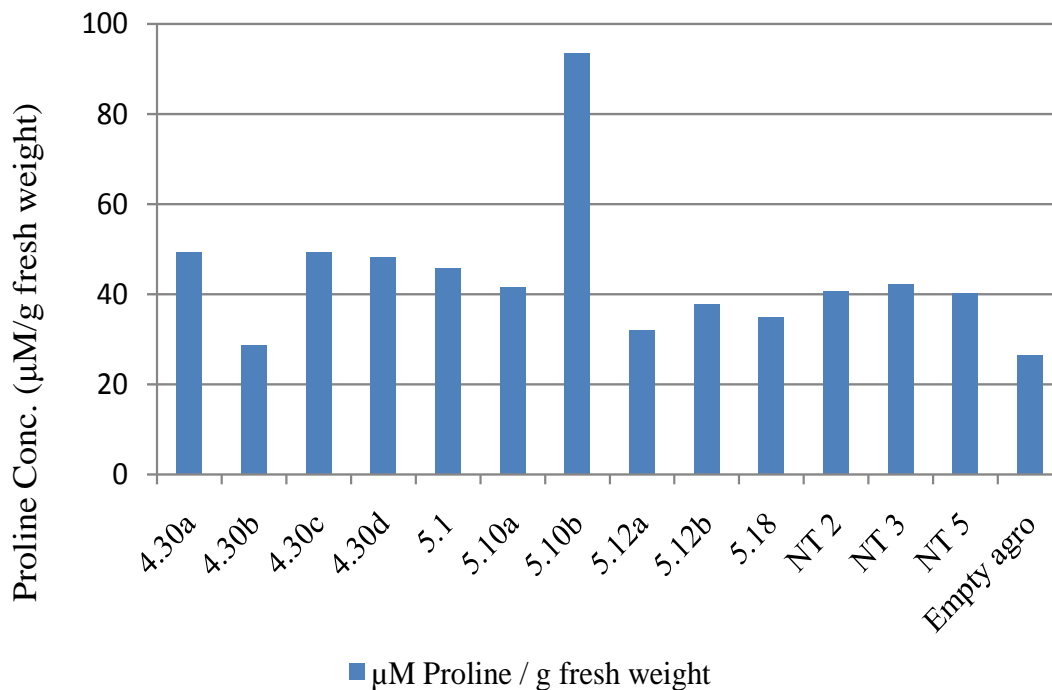
**Figure 5.** PCR analysis of T<sub>1</sub> plants transformed with *A. tumefaciens* strain EHA105 harboring plasmid pCAMBIA 1301:VuP5CS (Treatment 4) amplifying the 890 bp fragment of the *hpt* gene. Lanes 0 and 1: Leaf samples amplified from T<sub>1</sub> plants of seeds transformed with *Agrobacterium* strain LBA4404 with no plasmid (empty) and with the vector pCAMBIA1301 respectively; Lanes 30a, b, c and d: Leaf samples of T<sub>1</sub> plants of seeds inoculated with *Agrobacterium* strain EHA105 with the recombinant plasmid pCAMBIA1301:VuP5CS with seeds generated from one pod ; Lane +: Positive control with DNA from plasmid pCAMBIA1301; Lane - : Negative control (water); Lane NT: DNA from leaves of non-transformed T<sub>1</sub> plants.



**Figure 6.** Reaction of free proline with acid ninhydrin reagent. (a) Serial dilution of L-Proline treated with ninhydrin solution from 0 – 300 µM; (b) Leaf samples from transformed and non-transformed plants treated with ninhydrin solution.



**Figure 7.** Standard curve for proline.



**Figure 8.** Concentration of proline ( $\mu\text{M/g}$  fresh weight) in leaf samples taken from  $T_1$  cowpea plants variety K80 transformed with *A. tumefaciens* harbouring plasmids pCAMBIA 1301:VuP5CS and pCIP100:VuP5CS as well as non-transformed plants (NT). NB: The leaf samples with similar numbers followed by different letters were from plants from seeds from the same pod.



**Figure 9.** Roots of transformed and non-transformed  $T_1$  mature cowpea plants 3 weeks after water withdrawal. (a) Root of  $T_1$  plant transformed with plasmid pCIP100:VuP5CS; (b) Root of non-transformed plant.



**Table 4.** Average numbers of seeds harvested per pod of T<sub>1</sub> plants transformed with the VuP5CS gene and non-transformed plants.

A. tumefaciens strain and plasmid in transgenic plants	Mean No. of seeds per pod
EHA105 with pCIP100:VuP5CS	10.89 <sup>a</sup>
EHA105 with pCAMBIA 1301:VuP5CS	11.14 <sup>a</sup>
LBA4404 with pCAMBIA 1301:VuP5CS	10.29 <sup>a</sup>
EHA105 with no plasmid	6.42 <sup>b</sup>
Non transformed plants	5.68 <sup>b</sup>

Values followed by the same letters are not significantly different ( $F_{4,181} = 29.573$ ,  $p < 0.05$ )

with *A. tumefaciens* with no plasmid (Table 4).

## DISCUSSION

*In planta* seed transformation has been routinely used in transformation of *Arabidopsis* (Clough and Bent, 1998) using inflorescence or floral dip, soybean seeds (De Ronde et al., 2001) and cowpea nodal buds (Adesoye et al., 2008). From the T<sub>0</sub> plants generated from *in planta* seed transformation in this study, the highest transformation efficiency achieved was 20.5% with *A. tumefaciens* strain EHA105 harbouring plasmid pCAMBIA 1301:VuP5CS, and the lowest transformation efficiency of 8.8% was achieved with seeds inoculated with *A. tumefaciens* strain LBA4404 transformed with the recombinant vector pCAMBIA1301:VuP5CS. Ilori and Pellegrineschi (2011) reported a much lower transformation frequency of 0.36% when they transformed pollen in flower buds of Nigerian cowpeas *in planta* with *A. tumefaciens* strain pGV 2260 occasioned by flower abortion leading to low pod sets of between 8.9 and 10.2% in the transformed plants. The reason for the flower abortion was attributed to the liquid medium used in the culture of *Agrobacterium*, suggesting that pollen grains of cowpeas could be hydrophobic (Ilori and Pellegrineschi, 2011).

In this study, seeds from the same pod of PCR positive T<sub>0</sub> plants gave rise to seedlings which when analyzed by GUS histochemical assay, expressed  $\beta$ -glucuronidase activity in 4 out of 14 plants. Stable transformation was however achieved with the T<sub>2</sub> plants as the seeds harvested from T<sub>1</sub> plants showed the presence of the transgene in all the seeds from the same pod through GUS histochemical staining. In a similar study by Adesoye et al. (2008), *in planta* transformation used to inoculate cowpea nodal buds by electroporation with the Cry1AB gene against *Maruca vitrata* and *nptII* gene produced stable transformation with the T<sub>3</sub> plants showing the presence of the Cry1AB gene after PCR analysis. However, the segregation did not follow the Mendelian pattern of inheritance with more of the T<sub>1</sub> plants being non-transgenic than expected giving a ratio of between 0 and 1:5.3 for geneticin resistant: susceptible in the T<sub>1</sub> progeny. They attributed this to high chimerism

in the T<sub>0</sub> plants having a lower number of transformed cells compared to the non-transformed cells. Some T<sub>1</sub> plants according to Bent (2006) may carry multiple insertion loci thus their T<sub>2</sub> progeny families will not exhibit the 3:1 segregation for the transgenes.

De Ronde et al. (2001) successfully transformed soybean seeds *in planta* and generated 30% transformed T<sub>1</sub> progeny from the T<sub>0</sub> seeds inoculated. The efficiency was higher than the best efficiency of 20.5% achieved in the T<sub>0</sub> plants in this study. Therefore, it is evident that *in planta* transformation has the potential to deliver transformed plants faster and without the tissue culture process characterized by long and sensitive regeneration period on selective medium. It is also cheaper to carry out as inoculation can be carried out in established plants in the greenhouse (Adesoye et al. 2008). A simplified method for *Agrobacterium*-mediated transformation of *Arabidopsis thaliana* was developed by Clough and Bent (1998) by dipping immature floral buds in solutions of *A. tumefaciens*. In the analysis of *Artemisia thaliana* flowers transformed *in planta*, Bent (2006) noted that T<sub>1</sub> plants were hemizygous and some T<sub>2</sub> progeny from self-fertilized T<sub>1</sub> plants lacked the transgenes. It is therefore necessary to germinate T<sub>2</sub> seeds in antibiotic selection medium to eliminate the non-transgenic plants and also plants in which the selectable marker gene has been silenced to allow for phenotypic studies.

The ninhydrin test used to measure proline levels showed no significant difference between the transformed and non-transformed plants. Only one transformed leaf sample had a higher level of proline at 93.6  $\mu$ M/g fresh weight. This suggests that the accumulation of proline in cowpeas is triggered by water stress as was reported by Gazendam and Oelofse (2007) who concluded that proline levels remained the same in drought tolerant and susceptible cowpea cultivars when the plants were well watered, but increased with water stress, with the susceptible line accumulating more proline. In contrast, transformation of the tree species *Eucalyptus saligna* with the P5CS gene using leaf explants, found that the levels of proline increased four times in the leaves of transformed plants in comparison to the level in non-transformed plants without water stress (Dibax et al., 2010). Similarly, Kishor et al. (1995) over expressed the moth bean P5CS gene in transgenic tobacco leading to

increased production of proline between 830 to 1590 µg/g fresh weight in comparison to 80 to 89 µg/g fresh weight in the non-transgenic plants before water stress. After water stress, the proline levels rose to 6500 µg/g and 3500 µg/g fresh weight in the transformed and non-transformed plants respectively. According to Bates et al. (1973), proline increased proportionately faster than other amino acids in plants under water stress, and is thus useful as an evaluating parameter for selecting drought resistant crop varieties.

Although, there was no significant difference in proline levels in the plants transformed with the *VuP5CS* gene in comparison to the non-transformed plants in this study, the roots of all the 8 plants that were transformed with the *VuP5CS* gene were two times longer and better developed in comparison to those of non-transformed plants at maturity. This is in agreement with Kishor et al. (1995) who reported 40% longer roots in transgenic P5CS tobacco with twice the biomass of the control plants under salt stress conditions. Similarly, root growth was stimulated with application of proline to shoots of *Arabidopsis thaliana* with reduced root length observed in P5CS1 mutants in a study by Sharma et al. (2011).

The results in this study suggest that the increased root length and more seeds produced per pod in the transgenic lines would possibly allow continued growth of the plants under water stress, thus, conferring drought tolerance.

## CONCLUSION

This is the first report on *in planta* transformation of cowpea seeds by vacuum infiltration based on documented literature with transformation efficiency which is 10 to 20 times higher than that which is achieved from *in vitro* transformed and regenerated cowpea plants in documented literature. *A. tumefaciens* strain EHA105 gave the highest transformation efficiency of 20.5% and was successfully used to transform cowpea seeds *in planta* by vacuum infiltration with *VuP5CS* recombinant plasmids. Proline analysis of the T<sub>1</sub> plants transformed with the *VuP5CS* gene construct had no significant difference in proline content in the transformed and non-transformed plants. The roots of all the transformed plants were twice as long as those of non-transformed plants with the transformed plants having more seeds per pod at maturity, suggesting that the transformed plants may have better growth under water stress. The transgenic *VuP5CS* cowpeas have the potential to allow farmers a decent harvest in case of early cessation of rains in the arid and semi-arid areas of Kenya where farmers solely depend on rainfall, therefore improving food security.

## RECOMMENDATIONS

Other important traits can be introduced into cowpeas

using the established protocols. The conclusion of this project and its adoption could potentially benefit farmers in the arid and semi-arid regions of Kenya where cowpeas are grown under rain fed conditions and contribute towards food security in the region.

## Further research

The results of this study need to be carried on a step further to screen the seeds from the T<sub>1</sub> plants to allow for the proline analysis on the T<sub>2</sub> plants as well as the physiological characterization of the transformed and non-transformed plants under normal and water stress conditions.

## Conflict of interest

The authors have not declared any conflict of interest.

## ACKNOWLEDGEMENTS

The laboratory aspects of this project was partly supported by the BecA-ILRI Hub through the Africa Biosciences Challenge Fund (ABCF) program. The ABCF Program is funded by the Australian Department for Foreign Affairs and Trade (DFAT) through the BecA-CSIRO partnership; the Syngenta Foundation for Sustainable Agriculture (SFSA); the Bill & Melinda Gates Foundation (BMGF); the UK Department for International Development (DFID) and; the Swedish International Development Cooperation Agency (Sida). Part of the study was funded by the Kenya National Commission for Science, Technology and Innovation. The authors also like to acknowledge the International Institute of tropical Agriculture (IITA) and the International Potato Center (CIP) for their kind donations of plasmids pCAMBIA 1301 and pCIP100 respectively.

## REFERENCES

- Adesoye AI, Machuka J, Togun AO (2008). CRY 1AB transgenic cowpea obtained by nodal electroporation. *Afr. J. Biotechnol.* 7(18):3200-3210.
- Adesoye AI, Togun AO, Machuka J (2010). Transformation of cowpea (*Vigna unguiculata* L. Walp.) by *Agrobacterium* infiltration. *J. Appl. Biosci.* 30:1845-1860.
- Agbicodo EM, Fatokun CA, Muranaka S, Visser RGF, Linden CG (2009). Breeding drought tolerant cowpea: Constraints, accomplishments and future prospects. *Euphytica* 167:353-370.
- Amanullah M (2011). Proteins In: Amanullah M (Ed) *Medical Biochemistry and Biotechnology*, New central book agency (P) Ltd., Kolkata. 391p.
- Bakshi S, Sadhukhan A, Mishra S, Sahoo L (2011). Improved *Agrobacterium*-mediated transformation of cowpea via sonication and vacuum infiltration. *Plant Cell Rep.* 30:2281-2292.
- Bates LS, Waldren RP, Teare ID (1973). Rapid determination of free proline for water stress studies. *Plant Soil* 39:205-207.

- Bent A (2006). *Arabidopsis thaliana* floral dip transformation method. *Agrobacterium* protocols. pp. 87-104.
- Clough SJ, Bent AF (1998). Floral dip: a simplified method for *Agrobacterium* mediated transformation of *Arabidopsis thaliana*. *Plant J.* 16(60):735-743.
- De Ronde JA, Cress WA, Van der Mescht A (2001). *Agrobacterium* mediated transformation of soybean (*Glycine max*) seed with the  $\beta$ -glucuronidase marker gene. *South Afr. J. Sci.* 97:421-428.
- Dibax R, Deschamps C, Filho B, Vieira GE, Molinari HBC, De Campos MFK, Quoirin M (2010). Organogenesis and *Agrobacterium tumefaciens*-mediated transformation of *Eucalyptus saligna* with P5CS gene. *Biol. Plant.* 54(1):6-12.
- Doyle JJ, Doyle JL (1987). A rapid DNA isolation procedure for small quantities of fresh leaf tissue. *Phytochem. Bull.* 19:11-15.
- Fatokun C, Boukar O, Muranaka S, Chikoye D (2009). Enhancing drought tolerance in Cowpea. *Afr. Crop Sci. Confer. Proc.* 9:531-536.
- Gazendam I, Oelofse D (2007). Isolation of cowpea genes conferring drought tolerance: Construction of a cDNA drought expression library. *Water SA* 33:387-391.
- Gill SS, Tuteja N (2010). Reactive oxygen species and antioxidant machinery in abiotic stress tolerance in crop plants. *Plant Physiol. Biochem.* 48(12):909-930.
- Higgins TJ, Gollasch S, Molvig L, Moore A, Popelka C, Watkins P, Armstrong J, Mahon R, Ehlers J, Huesing J, Margam V, Shade R, Murdock L (2013). Genetic transformation of cowpea for protection against bruchids and caterpillars. *Proceedings of the fifth world cowpea conference* pp. 131-137.
- Ilori CO, Pellegrineschi A (2011). Transgene expression in cowpea (*Vigna unguiculata* (L.) Walp.) through *Agrobacterium* transformation of pollen in flower buds. *Afr. J. Biotechnol.* 10(56):11821-11828.
- Jefferson RA, Kavanagh TA, Bevan MW (1987). GUS Fusions:  $\beta$ -glucuronidase as a sensitive and versatile gene fusion marker in higher plants. *EMBO J.* 6(13):3901-3907.
- Karanja J, Nguluu S, Gatheru M (2012). Farm yard manure reduces the virulence of *Alectra vogelii* (Benth) on cowpea (*Vigna unguiculata*). *Afr. J. Plant Sci.* 6(3):130-136.
- Kikkert JR, Vidal JR, Reisch BI (2005). Stable transformation of plant cells by particle bombardment/biolistics. *Methods Mol. Biol.* 286:61-78.
- Kimiti JM, Odee DW, Vanlauwe B (2009). Area under grain legumes cultivation and problems faced by small holder farmers in legume production in the semi-arid Eastern Kenya. *J. Sustain. Dev. Afr.* 11(4):305-315.
- Kishor PBK, Hong Z, Miao C, Hu CA, Verma DPS (1995). Overexpression of  $\Delta$ -pyrroline-5-carboxylate synthetase increases proline production and confers osmotolerance in transgenic plants. *Plant Physiol.* 108:1387-1394.
- Kishor PBK, Sangam S, Amrutha RN, Laxmi PS, Naidu KR, Rao KRSS, Rao S, Reddy KJ, Theriappan P, Sreenivasulu N (2005). Regulation of proline biosynthesis, degradation, uptake and transport in higher plants: Its implications in plant growth and abiotic stress tolerance. *Curr. Sci.* 88(3):424-438.
- Mao JQ, Zaidi MA, Arnason JT, Altosaar I (2006). *In vitro* regeneration of *Vigna unguiculata* (L.) Walp. cv. Blackeye cowpea via shoot organogenesis. *Plant Cell Tissue Organ Cult.* 87:121-125.
- Ogunmodede BK and Oyenuga VA (1970). Vitamin B content of cowpeas (*Vigna unguiculata* Walp.) II. Pyridoxine, pantothenic acid, biotin and folic acid. *J. Sci. Food Agric.* 21(2):87-90.
- Popelka JC, Gollasch S, Moore A, Molvig L, Higgins TJ (2006). Genetic transformation of cowpea (*Vigna unguiculata* L.) and stable transmission of the transgene to progeny. *Plant Cell Rep.* 25:304-312.
- Popelka JC, Terryn N, Higgins TJV (2004). Gene technology for grain legumes: can it contribute to the food challenge in developing countries? *Plant Sci.* 167:195-206.
- Raveendar S, Premkumar A, Sasikumar S, Ignacimuthu S, Agastian P (2009). Development of a rapid, highly efficient system of organogenesis in cowpea, *Vigna unguiculata* (L.) Walp. *South Afr. J. Bot.* 75:17-21.
- Saini R, Sonia, Jaiwal PK (2003). Stable genetic transformation of *Vigna mungo* L. Hepper via *Agrobacterium tumefaciens*. *Plant Cell Rep.* 21(9):851-859.
- Sharma S, Villamor JG, Verslues PE (2011). Essential role of tissue-specific proline synthesis and catabolism in growth and redox balance at low water potential. *Plant Physiol.* 157:292-304.
- Shinozaki K, Shinozaki KY (1997). Gene expression and signal transduction in water-stress response. *Plant Physiol.* 115:327-334.
- Singh B, Hartmann P, Fatokun C, Tamo M, Tarawali S, Ortiz R (2003). Recent progress in cowpea improvement. *Chronica Hort.* 43(2):8-12.
- Solleti SK, Bakshi S, Sahoo L (2008). Additional virulence genes in conjunction with efficient selection scheme, and compatible culture regime enhance recovery of stable transgenic plants in cowpea via *Agrobacterium tumefaciens*-mediated transformation. *J. Biotechnol.* 135:97-104.
- Szabados L, Savoure A (2009). Proline: a multifunctional amino acid. *Trends Plant Sci.* 15(2):89-97.
- Tang Y, Chen L, Li XM, Li J, Luo Q, Lai J, Li HX (2012). Effect of culture conditions on the plant regeneration via organogenesis from cotyledonary node of cowpea (*Vigna unguiculata* L. Walp). *Afr. J. Biotechnol.* 11(14):3270-3275.
- Tardieu F (2012). Any trait or trait-related allele can confer drought tolerance: just design the right drought scenario. *J. Exp. Bot.* 63(1):25-31.
- Tshovhote NJ, Nesamvuni AE, Raphulu T, Gous RM (2003). The chemical composition, energy and amino acid digestibility of cowpeas used in poultry nutrition. *South Afr. J. Anim. Sci.* 33(1):65-69.
- USAID (2010). Staple food value chain analysis: Country rep. Kenya. pp. 150-157.



# Journal of Agricultural Biotechnology and Sustainable Development

## Related Journals Published by Academic Journals

- *Journal of Plant Breeding and Crop Science*
- *African Journal of Agricultural Research*
- *Journal of Horticulture and Forestry*
- *International Journal of Livestock Production*
- *International Journal of Fisheries and Aquaculture*
- *Journal of Cereals and Oilseeds*
- *Journal of Soil Science and Environmental Management*
- *Journal of Stored Products and Postharvest Research*

**academicJournals**